

GLENBROOK EXCAVATING RETIREMENT AUCTION

1350 Old Rand Road – Wauconda, IL 60084
Friday, August 10, 2018 – 9:00 A.M.

Glenbrook Excavating & Concrete, Dave Barnett & Terry Barnett, have been in business for 35+ years; have decided to retire. **ABSOLUTE ONE-OWNER** sale of quality equipment. Most of this equipment was purchased new and is all one owner equipment. **More information: www.powersauction.com**
WE WILL BE RUNNING TWO AUCTION RINGS THROUGHOUT THE DAY. ☆☆No-Reserve ♦ No Sales Tax ♦ No On-Site Buyers Premium! ☆☆

Powers Auction Service: 608-439-5761 ♦ Dan Powers: 608-214-3765 ♦ Mike Powers: 608-214-5761



WHEEL LOADERS: '15 JD 624K, JRB Quick Coupler, C/A/H, Front Aux, Ride Control, Front Dif Lock, 3 1/2 Yard JRB Bucket, 560 Hrs, SN# ZKFF670488. '04 JD 624J, JRB Quick Coupler, C/A/H, 3 1/2 Yard JRB Bucket, Ride Control, 11,296 Hrs SN# 591614. '03 JD 624H, JRB Quick Coupler, C/A/H, Front Aux, 3 1/2 Yard JRB Bucket, 10,825 Hrs SN# DW624HX586704. '00 JD 624H, JRB Quick Coupler, C/A/H, 3 1/2 Yard JRB Bucket, Ride Control, SN# 575844. JD 624H, JRB Quick Coupler, C/A/H. JD 624H, JRB Quick Coupler, C/A/H.



SKID LOADERS: Case SV300, C/A/H, D, Ride Control, 2-Speed, QT, Aux Hyd, Hand Controls, 1,449 Hrs, SN# JAFSV300JFM401836. Case 95XT, O-Rops, D, Ride Control, QT, Aux Hyd, Hand Controls, 4,156 Hrs, SN# JAF036341. Case 95XT, O-Rops, D, Ride Control, QT, Aux Hyd, Hand Controls, 4,011 Hrs. '03 NH LS190, Super Boom, Hi-Flow, O-Rops, D, Manual Tach, Aux Hyd, SN# LMU006024. NH LS190, Super Boom, Hi-Flow, O-Rops, D, Manual Tach, Aux Hyd. Case 1845C, O-Rops, D, Manual Tach, Hand Controls, 6,663 Hrs, SN# 0081516. Case SV300. Case 465. Case 95XT. Case 95XT.



SUPPORT EQUIPMENT: '88 JD 770BH Road Grader, 6x4, Front Scarfire, C/A/H, 12' Blade, 11,900 Hrs, SN# 519414. '89 JD 772BH Road Grader, 6x4, Front Scarfire, C/A/H, 12' Blade, 5,900 Hrs, SN# DW772BH527897. '01 JD 410G Loader Backhoe, 4x4, Extend-a-hoe, O-Rops, C/H, Ride Control, 3,060 Hrs, SN# 899260. '04 Kalmar C50 Forklift, Hard Rubber Tires, LP, 3 Stage Mast, Side Shift, SN# 645340. '92 Sullair 185 Portable Air Compressor, JD Diesel, 455 Hrs, SN# 004-109400. Rand-Air 175 80 Portable Air Compressor. Wacker G25T Portable Generator, Isuzu Diesel, 17,969 Hrs, SN# 714401003. MQ Power 45 Portable Generator, Isuzu Diesel, 7,620 Hrs.



EXCAVATORS: JD 245G, Pin Grabber, Aux Hyd, 1,450 Hrs. '07 Cat 328D LCR, Pin Grabber, 6,017 Hrs, SN# DKGNTN00209. '04 JD 450C, Pin Grabber, 8,685 Hrs, SN# CX091397. '04 JD 225C, Pin Grabber, 8,760 Hrs, SN# 500136. '03 JD 135C SR-LC, Pin Grabber, 8,266 Hrs, SN# 300045. '02 JD 330LC, Pin Grabber, Aux Hyd, Reads 780 Hrs. '01 Kobelco SK235 SR-LC, Pin Grabber, 11,836 Hrs. '01 Kobelco SK135 SR-LC, Pin Grabber, 9,700 Hrs, SN# YH01-00966. '02 Kobelco SK135 SR-LC, Pin Grabber, Aux Hyd, 7,900 Hrs. '05 Komatsu PC 600 LC 6, Pin Grabber. JD 85D. JD 135G. Volvo EC55B.



CRUSHING & STACKING: '12 Metso Lokotrack LT1213M Crusher, Self-Propelled, Steel Track, 47"x51" Crusher Opening, Self-Cleaning Magnet, Remote Radio Control, Job Site Ready, 4,500 Hrs, SN# 20360757. '01 Nordburg LT1213 Impact Crusher, Self-Propelled Mobile Track, SN# 71811. Wirtgen 2100DC Asphalt Grinder, Self-Propelled, 38' Discharge Conveyor, Cat C18 Diesel, 700HP, 4-Track Drive/Steering, 6,533 Hrs. '04 Extac S-5 Dirt Screener, Self-Propelled, Steel Track, Double Deck Screener, W/ 3 Able Mobile Dolly, 2,500 Hrs. '11 Telestack TC 421 Conveyor, Self-Propelled, Steel Track, 36"x70' Conveyor, Remote Radio Control, Weigh Shark, Deutz Diesel, Job Site Ready, 2,974 Hrs, SN# 17-03890911. '14 McCloskey 36"x80'T Conveyor, Self-Propelled, Steel Track, Weigh Shark, Kubota Diesel, 1,206 Hrs, SN# 82632. '07 Assnik Hyd Portable Radial Conveyor, 36x100, SN# 5566.



DOZERS & CRAWLER LOADER: JD 850J LPG, C/A/H, 6-Way Blade, Top Con Ready, 6,627 Hrs, SN# 13882. '01 JD 750C LGP Series 2, C/A/H, 6-Way Blade, 5,192 Hrs, SN# 898697. '97 Cat D6M XL, C/A/H, 6-Way Blade, 6,200 Hrs, SN# 3WN00734. '97Cat 963B Crawler Loader, O-Rops Canopy, 7,958 Hrs.



GPS SYSTEM: Top 8060G3-01 Kit, Dual GR-3 Digital Modem, Top Con FC-200 Laser, GR3 Base SN# 442 0862, GR3 Rover SN# 444 0865

TERMS & CONDITIONS:

- ♦ Listing Is Only A Guide
- ♦ Equipment Is Still in Working-Condition on Jobs
- ♦ Hours/Miles Will Change
- ♦ No Guarantees or Warranties Expressed or Implied
- ♦ No-Parking On-Site – Watch for Auction Parking Signs

COMPACTION EQUIPMENT: Ingersoll Rand SD110 Roller, 84", Smooth Drum, Front Blade, O-Rops, D, Shell Kit Available, 2,700 Hrs. '02 Bomag BW177DH-3 Roller, 66", Smooth Drum, O-Rops, D, 1,465 Hrs SN# 101581071058. '06 Ingersoll Rand DD-24 Roller, 48", Smooth Double Drum, O-Rops, D, 971 Hrs. '98 Ingersoll Rand DD-24 Roller, 48", Smooth Double Drum, O-Rops, D, 564 Hrs.

DUMP TRUCKS: '17 Ford F550 XL Dump Truck, 6.7 Power Stroke Turbo Diesel, Standard Cab, 4x4, Leather, P/W, P/L, P/M, 10' Aluminum Dump Body, W/ Salter, 22,584 Miles. '06 Ford F550 XL Super Duty Dump Truck, Power Stroke V8 Turbo Diesel, Standard Cab, Bench Seat, 4x4, Manual Windows-Locks, 10' Dump Body, 187,883 Miles. '01 Ford F450 XL Super Duty Dump Truck, Power Stroke V8 Diesel, Standard Cab, Bench Seat, 4x4, M/W-M/L, 10' Dump Body, 138,609 Miles.

PICK-UP TRUCKS: '07 Ford F750 Super Duty, C7 Cab, Standard Cab, Auto, Air Brakes, Maintainer Service Body, IR Hyd Air Compressor, 10,000 LBS 24' Crane, Miller 275 Welder, On-Board Fuel Tank, 160,000 Miles. '11 Ford F250 Lariat Super Duty Pick Up Truck, 6.7 Power Stroke Diesel, Crew Cab, Leather, P/W, P/L, P/M, P/S, Back Up Camera, Short Box, 127,947 Miles. '02 Ford Ranger, Standard Cab, Step Side Box. '97 GMC Water Truck. Mechanic Truck.

TRAILERS: '03 Redi Haul Skid Loader Trailer, Pintle Hitch, Ramps. '01 Redi Haul Durlo Skid Loader Trailer, Pintle Hitch, Ramps. '94 Dynaweld Trailer, Pintle Hitch, 25,850 GVWR, Tandem Electric Brakes. '94 MacLander Trailer. '98 Hillsboro Ind Flatbed. (2) Aluma 2 Place Snow Mobile Trailers.

ENCLOSED TRAILERS: '06 Wells Cargo Mobile Pressure Washing Enclosed Trailer, Fold Down Rear Door, Side Door, Tandem, Croyt KT6035 3500 PSI Pressure Washer, Water Tank. '03 Wells Cargo Mobile Oil Enclosed Trailer, Tandem, Side & Rear Doors, Shelving. '08 Wells Cargo 10x4 Utility Enclosed Trailer, Fold Down Door. '06 Wells Cargo 10x4 Utility Enclosed Trailer, Fold Down Door, Side Door. '01 Wells Cargo 12x6 Enclosed Trailer, Rear Doors. '94 Feather Lite 4 Place Enclosed Snow Mobile Trailer.

SERVICE TRUCKS: '12 Ford F550 Super Duty Service Truck, 6.7 Power Stroke Diesel, Standard Cab, Leather, P/W-P/L-P/M, Knapheide Walk-In Service Body, Mobile Fuel Tank, 79,690 Miles. '09 Ford F550 XLT Super Duty Service Truck, Power Stroke V8 Diesel, Standard Cab, P/W-P/L-P/M, Knapheide Walk-In Service Body, Mobile Fuel Tank, 87,588 Miles (Has Bas Motor). '03 Ford F550 Super Duty Service Truck, Power Stroke V8 Turbo Diesel, Standard Cab, 4x4, Center Council, P/L, P/W, Walk-In Service Body, 147,192 Miles. '03 Ford 550 XLT Super Duty Service Truck, Power Stroke V8 Turbo Diesel, Standard Cab, Center Council, P/L-P/W-P/M, 4x4, Walk-In Service Body, Power Inverter, 172,565 Miles. (2) Ford F550 Service Trucks.

TRUCK TRACTORS: '02 Peterbilt 379 Semi, Day Cab, Cat C-12 525, 18 Speed Trans, Wet Kit, Air Ride, 435,000 Miles. '00 Peterbilt 378 Semi, Day Cab, Cat C-12 410, 8LL Trans, Wet Kit, Air Ride, Jake, 59,255 Miles. '00 Peterbilt Semi, Day Cab, Wet Kit. '99 Mack CH613 Semi, Day Cab, Mack 400, 8LL Trans, Wet Kit, Air Ride, Jake, 360,000 Miles. '93 Peterbilt Semi, Day Cab, Cat C-12 410, 8LL Trans, Wet Kit, Air Ride, Jake, 565,000 Miles.

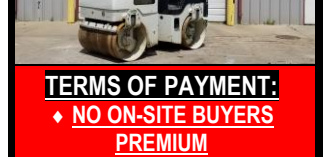
DUMP TRAILERS: '03 Hilbilt 20 Yard Dump Trailer, Hyd Dump, Manual Roll Tarp, Spring Ride. '01 Dierzen 20 Yard Dump Trailer, Hyd Dump, Mountain Tarp Manual Tarp, Spring Ride. '00 Ravens 20 Yard Dump Trailer, Hyd Dump, Manual Roll Tarp, Spring Ride. '00 Hilbilt 20 Yard Dump Trailer, Hyd Dump, Manual Roll Tarp, Spring Ride. '00 Hilbilt 20 Yard Dump Trailer, Hyd Dump, Manual Roll Tarp, Spring Ride. '92 Hilbilt 20 Yard Dump Trailer, Hyd Dump, Manual Roll Tarp, Spring Ride.

DETACH TRAILER: '16 Talbert Low Boy, 55 Ton, Hyd Detach, Quad Axle, SN# 40FSK5333G1035252.

MANY MORE ITEMS DAY OF SALE INCLUDING:

- Support Equipment – Skid Loader Attachments – Excavator & Wheel Loader Attachments – Welding Equipment – Tampers – Generators – Water Pumps – Shop Equipment – & MUCH MORE

Online Bidding Available at www.proxibid.com



TERMS OF PAYMENT:

- ♦ NO ON-SITE BUYERS PREMIUM
- ♦ All Purchasers must have a Bank Letter of Guarantee W/ Personal or Business Check
- ♦ Cash, Check, Certified Funds, Debit/Credit Card Accepted Day of Sale
- ♦ 4% Convenience Fee for Debit/Credit Cards



POWERS AUCTION SERVICE #441.000132
 2445 E State Hwy 11 - South Wayne, WI 53587
 608-439-5761 or www.powersauction.com



OBENAUF AUCTION SERVICE #444.000105
 810 Magna Drive – Round Lake, IL 60073
 847-546-2095 or www.obenaufauctions.com



Hotel Information on Our Website: www.powersauction.com ♦ Find & Like Us on Facebook: Powers Auction Service